

Distribuidor en España:
IMPORT EXPORT BAS SL



2022
GGI-SPERMEX
Genetics made in Germany

Holstein
Red Holstein
TPI BASE
Proofs: August 2022

Looking for German quality genetics published with US BREEDING VALUES?

Your first source of top-class genetics for your herd - GGI-SPERMEX GmbH

GGI-SPERMEX GmbH represents 12 leading German breeding and A.I. organizations at the international market for cattle genetics and is offering a unique product line from across Germany including experience, know-how and a wide range of genetics generated from the world's largest dairy breeding populations. This results into a unique portfolio including – besides the key breeds Holstein, Red Holstein, German Fleckvieh and Brown Swiss – more than 20 further dairy and beef cattle breeds, i.e. Angler, Jersey, several dual purpose and beef breeds.

In co-operation with our international partners, GGI-SPERMEX offers breeders worldwide access to the entire potential of German cattle breeding. The German breeding philosophy is clearly reflected in GGI-SPERMEX's product range. This includes high milk production with high components, very balanced conformation with excellent feet & legs and functional, healthy udders as well as high fertility and very good longevity. The aim is an efficient, healthy, trouble-free cow with high production over many lactations under a variety of housing and climatic conditions.

With this catalogue GGI-SPERMEX proudly presents a selection of top Holstein and Red Holstein bulls published with US breeding values.

If you are looking for German Fleckvieh and Brown Swiss, a separate catalogue for each of these breeds is available through GGI-SPERMEX as well. Please contact GGI-SPERMEX directly or our international partners for local service.

✉ info@ggi-spermex.de

@ www.ggi-spermex.de

f /GGI.SPERMEX

Holstein /
Red Holstein

f /SPERMEX

Fleckvieh /
Brown Swiss

ig /GGISPERMEX

yt /GGI-SPERMEX

GGI-SPERMEX

Genetics made in Germany

INDEX

HOLSTEIN

GENOMIC

Name	Beta Caseine	Page
Zarek	A2/A2	3
Glenn		3
Gladus	A2/A2	4
 Tubus		4
Graham		5
Foreman		5
Giroud	A2/A2	6
Pessoa	A2/A2	6
Aerosmith		7
Golf	A2/A2	7
Precision	A2/A2	8
Camus	A2/A2	8
Riddick		9
Ripley	A2/A2	9
Hulk P	A2/A2	10

DAUGHTER PROVEN

Name	Beta Caseine	Page
Garido		10
Rafting		11
Gigabyte	A2/A2	11
Super Uno		12
Imano		12
Tosco		13
Senator		13
Gipsy		14
Gracian		14
Charking		15
Boudy	A2/A2	15
Casino	A2/A2	16
Savio		16
Hotspot P		17
Saltasire RDC		17

RED HOLSTEIN

DAUGHTER PROVEN

Name	Beta Caseine	Page
Solitaire P		18

GENOMIC

Name	Beta Caseine	Page
Holmer PP	A2/A2	18

HOLSTEIN

GENOMIC-POLLED

Name	Beta Caseine	Page
Moro PP RDC		19
Hadil PP	A2/A2	19



Zarek



500945
624HO09074
HOL840M003220448453



Born: 2020-08-14 MATCREST ZAREK 945-ET

Beta Caseine A2A2 | Kappa Caseine AB | aAa --- | |

TPI +2959 Milk lbs +1318 Fat +0.14 % Protein +0.05 % Daughters: 0
 NM\$ +964 Herds: 0
 CM\$ +976 +93 lbs +56 lbs Reliability: 81 %

PL Productive life +5.1 76 % Rel.
 DPR Daughter pregnancy rate +0.5 76 % Rel.
 SCS Somatic cell score 2.83 78 % Rel.
 SCE Sire calving ease 1.6 % Diff. 63 % Rel.
 DCE Daughter calving ease 1.5 % Diff. 61 % Rel.
 SSB Sire stillbirth 5.0 % 60 % Rel.
 DSB Daughter stillbirth 5.0 % 59 % Rel.

♂ AltaZarek (♂ Topshot)

♀ Double-Eagle Medley Daisy (♂ Medley)
 ♀ Double-Eagle Duke Connie GP 84 (♂ Duke)
 ♀ Cookiecutter Haze (1) EX 90 (♂ Shamrock)



Zarek

Proofs: 2022-08

500945 Zarek		-1	0	+1	+2
PTAT	Type				+0.99
UDC	Udder Composite				+1.51
FLC	Feet & Legs Composite				+0.62
BSC	Body Composite				-0.33
Stature	Short				+0.35 Tall
Strength	Frail				-0.12 Strong
Body depth	Shallow				-0.24 Deep
Dairy form	Tight Ribbed				+0.62 Open Ribbed
Rump angle	High Pins				-0.15 Sloped
Thurl width	Narrow				-0.09 Wide
Rear leg (side view)	Posty				+0.28 Sickled
Rear leg (rear view)	Hock-in				+0.47 Straight
Foot angle	Low Angle				+0.25 Steep Angle
Feet & Legs Score	Low				+0.73 High
Fore udder attachment	Loose				+2.04 Strong
Rear udder height	Low				+1.64 High
Rear udder width	Narrow				+2.00 Wide
Udder cleft	Weak				-0.09 Strong
Udder depth	Deep				+1.36 Shallow
Front teat placement	Wide				+0.54 Close
Rear teat placement	Wide				+0.08 Close
Teat length	Short				+0.01 Long

Glenn



823284
624HO09081
HOLDEUM000541365201



Born: 2021-06-20 WILDER 365201

Beta Caseine A1A2 | Kappa Caseine BB | aAa 315246 | |

TPI +2947 Milk lbs +1446 Fat +0.11 % Protein +0.03 % Daughters: 0
 NM\$ +953 Herds: 0
 CM\$ +968 +89 lbs +55 lbs Reliability: 78 %

PL Productive life +5.0 73 % Rel.
 DPR Daughter pregnancy rate -0.7 72 % Rel.
 SCS Somatic cell score 2.61 73 % Rel.
 SCE Sire calving ease 2.3 % Diff. 60 % Rel.
 DCE Daughter calving ease 2.2 % Diff. 54 % Rel.
 SSB Sire stillbirth 6.0 % 54 % Rel.
 DSB Daughter stillbirth 4.5 % 52 % Rel.

♂ Gladius (♂ Gazebo)

♀ HET SC Charlene ET (1) VG 87 (♂ Soundcloud)
 ♀ HET SOU Chenile (1) VG 86 (♂ Sound System)
 2/2 10682 4,08 436 3,63 388
 ♀ Diepenhoek Chanel (3) VG 87 (♂ Balisto)



Glenn

Proofs: 2022-08

823284 Glenn		-1	0	+1	+2
PTAT	Type				+1.77
UDC	Udder Composite				+2.00
FLC	Feet & Legs Composite				+0.29
BSC	Body Composite				-0.39
Stature	Short				+1.70 Tall
Strength	Frail				-0.07 Strong
Body depth	Shallow				+0.27 Deep
Dairy form	Tight Ribbed				+1.89 Open Ribbed
Rump angle	High Pins				+0.25 Sloped
Thurl width	Narrow				+0.81 Wide
Rear leg (side view)	Posty				-0.01 Sickled
Rear leg (rear view)	Hock-in				+0.50 Straight
Foot angle	Low Angle				+0.42 Steep Angle
Feet & Legs Score	Low				+0.68 High
Fore udder attachment	Loose				+2.16 Strong
Rear udder height	Low				+2.89 High
Rear udder width	Narrow				+2.24 Wide
Udder cleft	Weak				+1.01 Strong
Udder depth	Deep				+2.61 Shallow
Front teat placement	Wide				+0.65 Close
Rear teat placement	Wide				+0.54 Close
Teat length	Short				-0.48 Long

Gladius



823250
624H009077
HOLDEUM000123451708



GGI-SPERMEX
Genetics made in Germany

Born: 2019-07-15 KAX GLADIUS

Beta Caseine A2A2 | Kappa Caseine AB | aAa 234156 |

TPI +2888 Milk lbs +1970 Fat +0.03 % Protein +0.03 %
 NM\$ +971 Daughters: 0
 CM\$ +982 Herds: 0
 Reliability: 80 %

PL Productive life +5.1 75 % Rel.
 DPR Daughter pregnancy rate -1.2 75 % Rel.
 SCS Somatic cell score 2.76 76 % Rel.
 SCE Sire calving ease 2.5 % Diff. 83 % Rel.
 DCE Daughter calving ease 2.5 % Diff. 57 % Rel.
 SSB Sire stillbirth 5.9 % 69 % Rel.
 DSB Daughter stillbirth 5.2 % 56 % Rel.

♂ Gazebo (♂ Gage)

♀ KAX Dollyanna (1) VG 85 (♂ Superhero)
 1/1 11839 3,98 471 3,52 417
 ♀ KAX Dolle (3) VG 87 (♂ Missouri)
 4/4 14610 3,54 5173,30 482
 ♀ KAX Dollargirl (3) VG 86 (♂ Suran)



Gladius

Proofs: 2022-08

823250 Gladius		-1	0	+1	+2
PTAT	Type				+1.07
UDC	Udder Composite				+1.29
FLC	Feet & Legs Composite				+0.40
BSC	Body Composite				-0.86
Stature	Short				+0.42 Tall
Strength	Frail				-0.43 Strong
Body depth	Shallow				-0.19 Deep
Dairy form	Tight Ribbed				+1.27 Open Ribbed
Rump angle	High Pins				+0.31 Sloped
Thurl width	Narrow				-0.22 Wide
Rear leg (side view)	Posty				-1.60 Sickled
Rear leg (rear view)	Hock-in				+0.46 Straight
Foot angle	Low Angle				+0.73 Steep Angle
Feet & Legs Score	Low				+0.51 High
Fore udder attachment	Loose				+1.25 Strong
Rear udder height	Low				+1.83 High
Rear udder width	Narrow				+1.66 Wide
Udder cleft	Weak				+0.51 Strong
Udder depth	Deep				+0.89 Shallow
Front teat placement	Wide				+0.59 Close
Rear teat placement	Wide				+0.85 Close
Teat length	Short				-0.51 Long

Tubus



823283
624H009083
HOLDEUM001504721087



GGI-SPERMEX
Genetics made in Germany

Born: 2021-04-01 DHG TUBUS

Beta Caseine A1A2 | Kappa Caseine AA | aAa 234156 |

TPI +2871 Milk lbs +1098 Fat +0.05 % Protein +0.05 %
 NM\$ +837 Daughters: 0
 CM\$ +849 Herds: 0
 Reliability: 81 %

PL Productive life +6.0 75 % Rel.
 DPR Daughter pregnancy rate +1.8 75 % Rel.
 SCS Somatic cell score 2.80 77 % Rel.
 SCE Sire calving ease 1.8 % Diff. 62 % Rel.
 DCE Daughter calving ease 1.8 % Diff. 60 % Rel.
 SSB Sire stillbirth 5.3 % 59 % Rel.
 DSB Daughter stillbirth 5.0 % 59 % Rel.

♂ Try Me (♂ Resolve)

♀ Cookiecutter Honorin-ET (1) VG 87 (♂ Basic)
 1/1 13715 3,56 488 3,07 421
 ♀ Cookiecutter MDY Honorit-ET (♂ Modesty)
 ♀ Cookiecutter SSHOT Honor (1) VG 85 (♂ Supershot)



Tubus

Proofs: 2022-08

823283 Tubus		-1	0	+1	+2
PTAT	Type				+1.84
UDC	Udder Composite				+1.81
FLC	Feet & Legs Composite				+0.12
BSC	Body Composite				±0.00
Stature	Short				+1.57 Tall
Strength	Frail				+0.08 Strong
Body depth	Shallow				+0.03 Deep
Dairy form	Tight Ribbed				+0.84 Open Ribbed
Rump angle	High Pins				+0.88 Sloped
Thurl width	Narrow				-0.15 Wide
Rear leg (side view)	Posty				-0.72 Sickled
Rear leg (rear view)	Hock-in				+0.26 Straight
Foot angle	Low Angle				+0.86 Steep Angle
Feet & Legs Score	Low				+0.49 High
Fore udder attachment	Loose				+2.16 Strong
Rear udder height	Low				+2.57 High
Rear udder width	Narrow				+2.05 Wide
Udder cleft	Weak				+0.63 Strong
Udder depth	Deep				+2.18 Shallow
Front teat placement	Wide				+0.80 Close
Rear teat placement	Wide				+0.67 Close
Teat length	Short				-0.13 Long

Graham



769555
624H009086
HOLDEUM001505201168



GGI-SPERMEX
Genetics made in Germany

Born: 2021-06-18 KHE GRAHAM

Beta Caseine A1A2 | Kappa Caseine AB | aAa --- | |

TPI +2853 Milk lbs +1539 Fat +0.04 % Protein +0.02 %
 NM\$ +854 Herds: 0
 CM\$ +866 +70 lbs +55 lbs Daughters: 0
 Reliability: 78 %

PL Productive life +5.6 73 % Rel.
 DPR Daughter pregnancy rate +0.1 73 % Rel.
 SCS Somatic cell score 2.68 74 % Rel.
 SCE Sire calving ease 1.9 % Diff. 60 % Rel.
 DCE Daughter calving ease 2.4 % Diff. 54 % Rel.
 SSB Sire stillbirth 5.7 % 54 % Rel.
 DSB Daughter stillbirth 5.2 % 52 % Rel.

♂ **Gladius** (♂ Gazebo)

- ♀ Ibrahimia (1) VG 86 (♂ Gywer RDC)
100 T. 3653 3,61 132 3,18 116
- ♀ Ibiziana (2) VG 87 (♂ Salvatore)
3/2 10960 3,37 369 3,28 360
- ♀ Ibiza (1) GP 83 (♂ Penley)



Graham

Proofs: 2022-08

769555 Graham		-1	0	+1	+2
PTAT	Type				+1.41
UDC	Udder Composite				+1.67
FLC	Feet & Legs Composite				+0.34
BSC	Body Composite				+0.38
Stature	Short				+1.14 Tall
Strength	Frail				+0.58 Strong
Body depth	Shallow				+0.51 Deep
Dairy form	Tight Ribbed				+0.87 Open Ribbed
Rump angle	High Pins				-0.22 Sloped
Thurl width	Narrow				+0.42 Wide
Rear leg (side view)	Posty				-1.28 Sickled
Rear leg (rear view)	Hock-in				+0.62 Straight
Foot angle	Low Angle				+1.00 Steep Angle
Feet & Legs Score	Low				+0.55 High
Fore udder attachment	Loose				+1.77 Strong
Rear udder height	Low				+2.35 High
Rear udder width	Narrow				+2.34 Wide
Udder cleft	Weak				+0.65 Strong
Udder depth	Deep				+1.39 Shallow
Front teat placement	Wide				+1.05 Close
Rear teat placement	Wide				+0.51 Close
Teat length	Short				-0.01 Long

Foreman



823268
624H009089
HOLDEUM001406051280



GGI-SPERMEX
Genetics made in Germany

Born: 2020-04-17 SHA FOREMAN

Beta Caseine A1A2 | Kappa Caseine AA | aAa 432516 | |

TPI +2850 Milk lbs +1233 Fat +0.11 % Protein +0.07 %
 NM\$ +874 Herds: 0
 CM\$ +885 +81 lbs +59 lbs Daughters: 0
 Reliability: 79 %

PL Productive life +4.4 74 % Rel.
 DPR Daughter pregnancy rate -0.4 73 % Rel.
 SCS Somatic cell score 3.04 74 % Rel.
 SCE Sire calving ease 1.9 % Diff. 75 % Rel.
 DCE Daughter calving ease 1.8 % Diff. 53 % Rel.
 SSB Sire stillbirth 5.6 % 63 % Rel.
 DSB Daughter stillbirth 5.3 % 52 % Rel.

♂ **Freemax** (♂ Imax)

- ♀ SHA Grumeti (2) VG 87 (♂ Rubicon)
2/2 12473 4,04 504 3,46 432
- ♀ SHA Gerenuk (4) EX 91 (♂ Balisto)
5/5 12098 4,22 511 3,60 435
- ♀ WEH Georgina (3) VG 87 (♂ Numero Uno)



Foreman

Proofs: 2022-08

823268 Foreman		-1	0	+1	+2
PTAT	Type				+1.33
UDC	Udder Composite				+1.42
FLC	Feet & Legs Composite				+0.78
BSC	Body Composite				-0.25
Stature	Short				-0.35 Tall
Strength	Frail				-0.12 Strong
Body depth	Shallow				-0.32 Deep
Dairy form	Tight Ribbed				+0.52 Open Ribbed
Rump angle	High Pins				-0.36 Sloped
Thurl width	Narrow				+1.08 Wide
Rear leg (side view)	Posty				+0.60 Sickled
Rear leg (rear view)	Hock-in				+0.90 Straight
Foot angle	Low Angle				+0.41 Steep Angle
Feet & Legs Score	Low				+0.61 High
Fore udder attachment	Loose				+1.66 Strong
Rear udder height	Low				+2.12 High
Rear udder width	Narrow				+2.20 Wide
Udder cleft	Weak				-0.64 Strong
Udder depth	Deep				+0.60 Shallow
Front teat placement	Wide				-0.37 Close
Rear teat placement	Wide				-0.76 Close
Teat length	Short				+0.68 Long

Giroud



823285
624H009088
HOLDEUM000124167925



GGI-SPERMEX
Genetics made in Germany

Born: 2021-05-30 HAS GIROUD

Beta Caseine A2A2 | Kappa Caseine BB | aAa 423165 | |

TPI +2844 Milk lbs +2066 Fat -0.06 % Protein -0.01 %
 Daughters: 0
 NM\$ +811 +2066 -0.06 % -0.01 % Herds: 0
 CM\$ +819 +61 lbs +61 lbs Reliability: 78 %

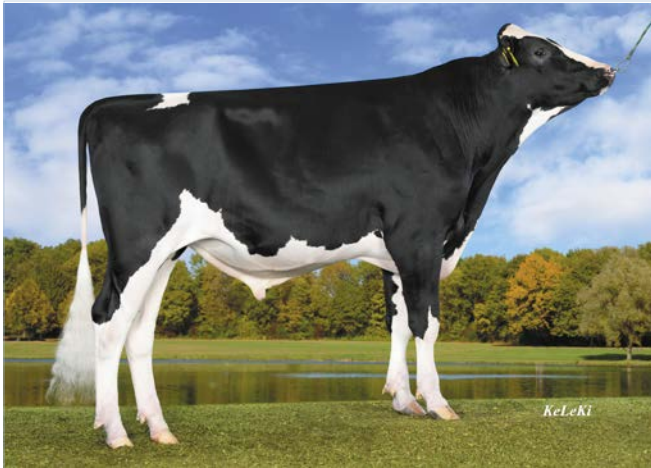
PL Productive life +4.8 73 % Rel.
 DPR Daughter pregnancy rate -1.4 73 % Rel.
 SCS Somatic cell score 2.60 74 % Rel.
 SCE Sire calving ease 2.2 % Diff. 60 % Rel.
 DCE Daughter calving ease 2.0 % Diff. 54 % Rel.
 SSB Sire stillbirth 5.6 % 54 % Rel.
 DSB Daughter stillbirth 5.0 % 52 % Rel.

♂ **Gladius** (♂ Gazebo)

♀ RZH Seattle (♂ **Dateline**)

♀ Ri-Val-Re Rasp 2131-ET (♂ **Rubi-Asp**)
 1/1 12302 4,53 557 3,38 416

♀ MS Sofias Serendipity RC (♂ **Supershot**)



Giroud

Proofs: 2022-08

823285 Giroud		-1	0	+1	+2
PTAT	Type				+1.87
UDC	Udder Composite				+2.31
FLC	Feet & Legs Composite				+0.56
BSC	Body Composite				-0.70
Stature	Short				+1.06 Tall
Strength	Frail				-0.32 Strong
Body depth	Shallow				+0.01 Deep
Dairy form	Tight Ribbed				+1.72 Open Ribbed
Rump angle	High Pins				+0.87 Sloped
Thurl width	Narrow				+0.54 Wide
Rear leg (side view)	Posty				-1.43 Sickled
Rear leg (rear view)	Hock-in				+0.50 Straight
Foot angle	Low Angle				+1.29 Steep Angle
Feet & Legs Score	Low				+0.83 High
Fore udder attachment	Loose				+2.54 Strong
Rear udder height	Low				+3.08 High
Rear udder width	Narrow				+2.59 Wide
Udder cleft	Weak				+1.22 Strong
Udder depth	Deep				+2.14 Shallow
Front teat placement	Wide				+0.72 Close
Rear teat placement	Wide				+0.98 Close
Teat length	Short				+0.22 Long

Pessoa



823279
624H009085
HOLDEUM000124167904



GGI-SPERMEX
Genetics made in Germany

Born: 2021-03-19 HAS PESSOA

Beta Caseine A2A2 | Kappa Caseine AB | aAa 342561 | |

TPI +2840 Milk lbs +1413 Fat +0.08 % Protein +0.05 %
 Daughters: 0
 NM\$ +785 +1413 +0.08 % +0.05 % Herds: 0
 CM\$ +801 +79 lbs +59 lbs Reliability: 78 %

PL Productive life +3.5 73 % Rel.
 DPR Daughter pregnancy rate -1.9 73 % Rel.
 SCS Somatic cell score 2.66 74 % Rel.
 SCE Sire calving ease 1.9 % Diff. 61 % Rel.
 DCE Daughter calving ease 2.7 % Diff. 55 % Rel.
 SSB Sire stillbirth 5.1 % 56 % Rel.
 DSB Daughter stillbirth 6.4 % 54 % Rel.

♂ **Proximo** (♂ Prosperous)

♀ RZH Seattle (♂ **Dateline**)

♀ Ri-Val-Re Rasp 2131-ET (♂ **Rubi-Asp**)
 1/1 12302 4,53 557 3,38 416

♀ MS Sofias Serendipity RC (♂ **Supershot**)



Pessoa

Proofs: 2022-08

823279 Pessoa		-1	0	+1	+2
PTAT	Type				+1.63
UDC	Udder Composite				+1.82
FLC	Feet & Legs Composite				+1.13
BSC	Body Composite				-0.26
Stature	Short				+0.73 Tall
Strength	Frail				+0.09 Strong
Body depth	Shallow				+0.15 Deep
Dairy form	Tight Ribbed				+1.21 Open Ribbed
Rump angle	High Pins				+0.91 Sloped
Thurl width	Narrow				+0.37 Wide
Rear leg (side view)	Posty				-1.40 Sickled
Rear leg (rear view)	Hock-in				+1.20 Straight
Foot angle	Low Angle				+1.57 Steep Angle
Feet & Legs Score	Low				+1.23 High
Fore udder attachment	Loose				+1.79 Strong
Rear udder height	Low				+2.46 High
Rear udder width	Narrow				+2.52 Wide
Udder cleft	Weak				+1.27 Strong
Udder depth	Deep				+1.01 Shallow
Front teat placement	Wide				+1.03 Close
Rear teat placement	Wide				+1.37 Close
Teat length	Short				-0.07 Long

Aerosmith



823259
624H009071
HOLCANM000013440358



Born: 2019-12-06 STANTONS AEROSMITH-ET

Beta Caseine A1A2 | Kappa Caseine AA | aAa 234 | |

TPI +2828 Milk lbs +930 Fat +0.14 % Protein +0.06 % Daughters: 0
 NM\$ +763 +930 +0.14 % +0.06 % Herds: 0
 CM\$ +777 +75 lbs +45 lbs Reliability: 82 %

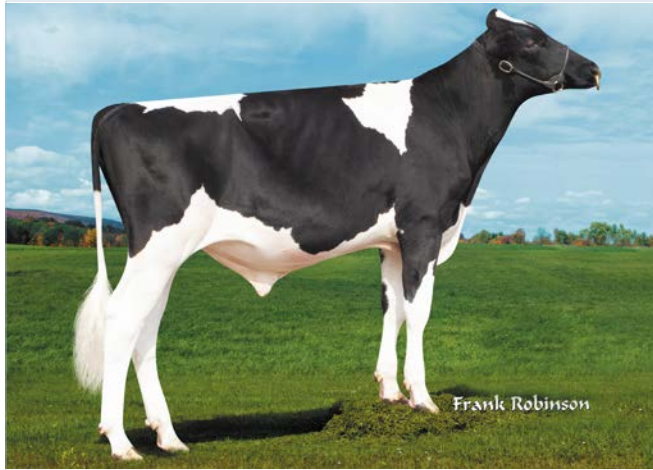
PL Productive life +4.0 76 % Rel.
 DPR Daughter pregnancy rate -0.2 75 % Rel.
 SCS Somatic cell score 2.78 78 % Rel.
 SCE Sire calving ease 1.9 % Diff. 62 % Rel.
 DCE Daughter calving ease 1.9 % Diff. 60 % Rel.
 SSB Sire stillbirth 5.7 % 59 % Rel.
 DSB Daughter stillbirth 3.8 % 58 % Rel.

♂ Aristocrat (♂ Frazzled)

♀ Stanton's Bight Melody (1) VG 85 (♂ Bight)
 1/1 14591 4,45 650 3,47 507

♀ Stanton's Very Mountain (4) EX 90 (♂ Montana)
 4/3 11592 4,57 530 3,51 407

♀ Stanton's Mardi Vivica (2) VG 85 (♂ Mardi Gras)



Aerosmith

Proofs: 2022-08

823259 Aerosmith		-1	0	+1	+2
PTAT	Type				+1.69
UDC	Udder Composite				+2.37
FLC	Feet & Legs Composite				+0.03
BSC	Body Composite				+0.96
Stature	Short				+1.57 Tall
Strength	Frail				+0.85 Strong
Body depth	Shallow				+0.49 Deep
Dairy form	Tight Ribbed				+0.44 Open Ribbed
Rump angle	High Pins				-0.24 Sloped
Thurl width	Narrow				+0.89 Wide
Rear leg (side view)	Posty				+0.59 Sickled
Rear leg (rear view)	Hock-in				-0.02 Straight
Foot angle	Low Angle				+1.27 Steep Angle
Feet & Legs Score	Low				+0.42 High
Fore udder attachment	Loose				+3.46 Strong
Rear udder height	Low				+2.65 High
Rear udder width	Narrow				+2.29 Wide
Udder cleft	Weak				+1.44 Strong
Udder depth	Deep				+2.84 Shallow
Front teat placement	Wide				+1.78 Close
Rear teat placement	Wide				+1.84 Close
Teat length	Short				-0.72 Long

Golf



159002
624H009079
HOLNLDM000690845680



Born: 2019-12-14 GOLF

Beta Caseine A2A2 | Kappa Caseine AB | aAa 342561 | |

TPI +2811 Milk lbs +766 Fat +0.14 % Protein +0.08 % Daughters: 0
 NM\$ +694 +766 +0.14 % +0.08 % Herds: 0
 CM\$ +712 +71 lbs +48 lbs Reliability: 81 %

PL Productive life +3.1 75 % Rel.
 DPR Daughter pregnancy rate ±0.0 75 % Rel.
 SCS Somatic cell score 2.77 76 % Rel.
 SCE Sire calving ease 2.0 % Diff. 60 % Rel.
 DCE Daughter calving ease 1.3 % Diff. 57 % Rel.
 SSB Sire stillbirth 5.7 % 54 % Rel.
 DSB Daughter stillbirth 4.5 % 56 % Rel.

♂ Garido (♂ Gymnast)

♀ Westenrade Annie 174 (3) VG 87 (♂ Finder)
 3/2 10439 4,98 520 4,03 421

♀ Westenrade Annie 167 (4) VG 88 (♂ AltaSpring)
 5/4 12420 3,91 486 3,62 449

♀ Westenrade Annie 156 (1) VG 87 (♂ Goldday)



Golf

Proofs: 2022-08

159002 Golf		-1	0	+1	+2
PTAT	Type				+1.71
UDC	Udder Composite				+1.75
FLC	Feet & Legs Composite				+1.45
BSC	Body Composite				+1.31
Stature	Short				+1.40 Tall
Strength	Frail				+1.29 Strong
Body depth	Shallow				+0.85 Deep
Dairy form	Tight Ribbed				+0.51 Open Ribbed
Rump angle	High Pins				-0.84 Sloped
Thurl width	Narrow				+1.38 Wide
Rear leg (side view)	Posty				-1.00 Sickled
Rear leg (rear view)	Hock-in				+1.95 Straight
Foot angle	Low Angle				+1.41 Steep Angle
Feet & Legs Score	Low				+1.59 High
Fore udder attachment	Loose				+2.42 Strong
Rear udder height	Low				+2.44 High
Rear udder width	Narrow				+2.21 Wide
Udder cleft	Weak				+0.49 Strong
Udder depth	Deep				+1.95 Shallow
Front teat placement	Wide				+0.21 Close
Rear teat placement	Wide				+0.14 Close
Teat length	Short				+0.40 Long

Riddick



823277
624H009090
HOLDEUM000363475697



GGI-SPERMEX
Genetics made in Germany

Born: 2021-01-27 MB RIDDICK

Beta Caseine A1A2 | Kappa Caseine AA | aAa 345216 | |

TPI +2782 Milk lbs +1002 Fat +0.14 % Protein +0.05 %
 NM\$ +877 Daughters: 0 Herds: 0
 CM\$ +891 Reliability: 80 %

PL Productive life +5.5 75 % Rel.
 DPR Daughter pregnancy rate -1.5 74 % Rel.
 SCS Somatic cell score 2.71 76 % Rel.
 SCE Sire calving ease 2.0 % Diff. 63 % Rel.
 DCE Daughter calving ease 2.0 % Diff. 60 % Rel.
 SSB Sire stillbirth 5.8 % 59 % Rel.
 DSB Daughter stillbirth 4.6 % 58 % Rel.

♂ Radar (♂ Imax)

- ♀ MB 368 (1) GP 83 (♂ Huey)
200 T. 7737 3,72 288 3,27 253
- ♀ MB MAR Junis (1) VG 86 (♂ Outlast)
2/1 11224 4,04 454 3,56 400
- ♀ COL Jule Mr (2) GP 83 (♂ Battlecry)



Riddick

Proofs: 2022-08

823277 Riddick		-1	0	+1	+2
PTAT	Type				+1.20
UDC	Udder Composite				+1.56
FLC	Feet & Legs Composite				+0.29
BSC	Body Composite				-0.50
Stature	Short				+0.57 Tall
Strength	Frail				-0.39 Strong
Body depth	Shallow				-0.38 Deep
Dairy form	Tight Ribbed				+0.72 Open Ribbed
Rump angle	High Pins				+0.41 Sloped
Thurl width	Narrow				+0.11 Wide
Rear leg (side view)	Posty				+0.30 Sickled
Rear leg (rear view)	Hock-in				+0.02 Straight
Foot angle	Low Angle				+0.02 Steep Angle
Feet & Legs Score	Low				+0.52 High
Fore udder attachment	Loose				+1.64 Strong
Rear udder height	Low				+2.04 High
Rear udder width	Narrow				+1.25 Wide
Udder cleft	Weak				+0.71 Strong
Udder depth	Deep				+2.17 Shallow
Front teat placement	Wide				+0.21 Close
Rear teat placement	Wide				+0.20 Close
Teat length	Short				-0.44 Long

Ripley



575224
624H009087
HOLDEUM000124244711



GGI-SPERMEX
Genetics made in Germany

Born: 2021-02-25 AGH RIPLEY

Beta Caseine A2A2 | Kappa Caseine BB | aAa 243615 | |

TPI +2782 Milk lbs +1539 Fat +0.04 % Protein +0.04 %
 NM\$ +787 Daughters: 0 Herds: 0
 CM\$ +796 Reliability: 80 %

PL Productive life +3.9 74 % Rel.
 DPR Daughter pregnancy rate -1.5 74 % Rel.
 SCS Somatic cell score 2.90 76 % Rel.
 SCE Sire calving ease 2.2 % Diff. 62 % Rel.
 DCE Daughter calving ease 2.1 % Diff. 59 % Rel.
 SSB Sire stillbirth 6.0 % 58 % Rel.
 DSB Daughter stillbirth 4.8 % 57 % Rel.

♂ Radar (♂ Imax)

- ♀ Zuerich (1) GP 84 (♂ Gywer RDC)
200 T. 7227 3,04 220 3,27 236
- ♀ Venezia (1) VG 86 (♂ Malinus)
1/1 14162 3,56 504 3,26 462
- ♀ Larissa (2) VG 86 (♂ Aloud)



Ripley

Proofs: 2022-08

575224 Ripley		-1	0	+1	+2
PTAT	Type				+1.50
UDC	Udder Composite				+1.32
FLC	Feet & Legs Composite				+1.03
BSC	Body Composite				-0.22
Stature	Short				+1.04 Tall
Strength	Frail				-0.05 Strong
Body depth	Shallow				+0.04 Deep
Dairy form	Tight Ribbed				+1.00 Open Ribbed
Rump angle	High Pins				+0.46 Sloped
Thurl width	Narrow				+0.24 Wide
Rear leg (side view)	Posty				-0.12 Sickled
Rear leg (rear view)	Hock-in				+0.85 Straight
Foot angle	Low Angle				+1.15 Steep Angle
Feet & Legs Score	Low				+1.26 High
Fore udder attachment	Loose				+1.15 Strong
Rear udder height	Low				+1.99 High
Rear udder width	Narrow				+1.66 Wide
Udder cleft	Weak				+0.88 Strong
Udder depth	Deep				+1.45 Shallow
Front teat placement	Wide				+0.38 Close
Rear teat placement	Wide				+0.38 Close
Teat length	Short				+0.15 Long

Hulk P



685600
624H009058
HOLDEUM000540629103



Born: 2018-10-15 HULK P HOT
Beta Caseine A2A2 | Kappa Caseine AB | aAa 432165 | Pp*

TPI +2731 Milk lbs +573 Fat +0.12 % Protein +0.10 %
 NM\$ +602 Daughters: 0
 CM\$ +623 Herds: 0
 Reliability: 81 %

PL Productive life +3.1 76 % Rel.
 DPR Daughter pregnancy rate +0.8 76 % Rel.
 SCS Somatic cell score 2.80 77 % Rel.
 SCE Sire calving ease 2.5 % Diff. 87 % Rel.
 DCE Daughter calving ease 2.4 % Diff. 60 % Rel.
 SSB Sire stillbirth 6.2 % 71 % Rel.
 DSB Daughter stillbirth 5.6 % 59 % Rel.

♂ Hotspot P (♂ Superhero)

- ♀ WIL Herriet (1) VG 86 (♂ Euclid)
3/2 11524 4,38 505 3,71 428
- ♀ WIL Honig (4) VG 89 (♂ Lineman)
5/4 12554 3,87 486 3,68 462
- ♀ WIL Hira (1) VG 85 (♂ Saloon)



Hulk P

Proofs: 2022-08

685600 Hulk P		-1	0	+1	+2
PTAT	Type				+1.96
UDC	Udder Composite				+1.80
FLC	Feet & Legs Composite				+0.71
BSC	Body Composite				+0.59
Stature	Short				+2.20 Tall
Strength	Frail				+0.45 Strong
Body depth	Shallow				+0.63 Deep
Dairy form	Tight Ribbed				+0.94 Open Ribbed
Rump angle	High Pins				+0.62 Sloped
Thurl width	Narrow				+0.89 Wide
Rear leg (side view)	Posty				-1.43 Sickled
Rear leg (rear view)	Hock-in				+0.77 Straight
Foot angle	Low Angle				+1.34 Steep Angle
Feet & Legs Score	Low				+1.26 High
Fore udder attachment	Loose				+2.81 Strong
Rear udder height	Low				+2.77 High
Rear udder width	Narrow				+2.13 Wide
Udder cleft	Weak				+0.06 Strong
Udder depth	Deep				+3.03 Shallow
Front teat placement	Wide				-0.58 Close
Rear teat placement	Wide				-1.22 Close
Teat length	Short				+0.51 Long

Garido

daughter proven

811606
624H009030
HOLDEUM000122629481



Born: 2017-08-24 GARIDO
Beta Caseine A1A2 | Kappa Caseine AE | aAa 315426 | H1C

TPI +2844 Milk lbs +1392 Fat +0.11 % Protein +0.03 %
 NM\$ +741 Daughters: 1095
 CM\$ +754 Herds: 284
 Reliability: 90 %

PL Productive life +2.6 88 % Rel.
 DPR Daughter pregnancy rate -0.6 89 % Rel.
 SCS Somatic cell score 2.66 90 % Rel.
 SCE Sire calving ease 2.2 % Diff. 80 % Rel.
 DCE Daughter calving ease 1.7 % Diff. 65 % Rel.
 SSB Sire stillbirth 6.1 % 54 % Rel.
 DSB Daughter stillbirth 4.2 % 71 % Rel.

♂ Gymnast (♂ Doorsopen)

- ♀ Sunrise (2) VG 86 (♂ Penley)
4/3 10354 4,20 435 3,75 388
- ♀ Shirley (♂ Boss)
- ♀ Sambuca (3) VG 86 (♂ Beacon)



Garido

Proofs: 2022-08

811606 Garido		-1	0	+1	+2
PTAT	Type				+1.36
UDC	Udder Composite				+1.25
FLC	Feet & Legs Composite				+0.91
BSC	Body Composite				+1.31
Stature	Short				+1.41 Tall
Strength	Frail				+1.14 Strong
Body depth	Shallow				+0.79 Deep
Dairy form	Tight Ribbed				+0.55 Open Ribbed
Rump angle	High Pins				-0.81 Sloped
Thurl width	Narrow				+2.10 Wide
Rear leg (side view)	Posty				-0.82 Sickled
Rear leg (rear view)	Hock-in				+1.16 Straight
Foot angle	Low Angle				+0.87 Steep Angle
Feet & Legs Score	Low				+1.17 High
Fore udder attachment	Loose				+1.11 Strong
Rear udder height	Low				+2.41 High
Rear udder width	Narrow				+2.25 Wide
Udder cleft	Weak				+0.99 Strong
Udder depth	Deep				+0.70 Shallow
Front teat placement	Wide				-0.47 Close
Rear teat placement	Wide				+0.61 Close
Teat length	Short				+0.64 Long

Rafting

daughter proven

684971
624HO09017
HOLDEUM000770601887



Born: 2017-07-28 SIEMERS RUW RAFTING

Beta Caseine A1A2 | Kappa Caseine AB | aAa 342516 |

TPI +2812 Milk lbs +1458 Fat +0.06% Protein +0.04% Daughters: 422
 NM\$ +666 Herds: 210
 CM\$ +677 +75 lbs +57 lbs Reliability: 90%

PL Productive life +2.7 87 % Rel.
 DPR Daughter pregnancy rate -1.7 88 % Rel.
 SCS Somatic cell score 2.81 90 % Rel.
 SCE Sire calving ease 2.3 % Diff. 77 % Rel.
 DCE Daughter calving ease 2.6 % Diff. 63 % Rel.
 SSB Sire stillbirth 6.8 % 57 % Rel.
 DSB Daughter stillbirth 6.7 % 69 % Rel.

♂ **Ragen** (♂ Stoic)

♀ Siemers Silver-D-Rozza-ET (♂ **Silver**)

♀ Siemers Doorman Rozette (1) VG 88 (♂ **Doorman**)
 2/2 17731 4,26 756 3,17 562

♀ Cherry Crest Manoman Roz (2) EX 91 (♂ **Man-O-Man**)



Rafting

Proofs: 2022-08

		-1	0	+1	+2
684971 Rafting	PTAT Type				+2.24
	UDC Udder Composite				+2.00
	FLC Feet & Legs Composite				+1.97
	BSC Body Composite				+0.85
	Stature Short				+2.04 Tall
	Strength Frail				+0.95 Strong
	Body depth Shallow				+0.66 Deep
	Dairy form Tight Ribbed				+1.04 Open Ribbed
	Rump angle High Pins				-0.90 Sloped
	Thurl width Narrow				+0.78 Wide
	Rear leg (side view) Posty				-0.55 Sickled
	Rear leg (rear view) Hock-in				+2.50 Straight
	Foot angle Low Angle				+2.85 Steep Angle
	Feet & Legs Score Low				+2.15 High
	Fore udder attachment Loose				+2.62 Strong
	Rear udder height Low				+2.69 High
	Rear udder width Narrow				+2.26 Wide
	Udder cleft Weak				+1.66 Strong
	Udder depth Deep				+2.28 Shallow
	Front teat placement Wide				+1.07 Close
	Rear teat placement Wide				+1.50 Close
	Teat length Short				-0.13 Long

Gigabyte

daughter proven

573654
624HO09039
HOLDEUM000122835602



Born: 2017-10-31 SH GIGABYTE

Beta Caseine A2A2 | Kappa Caseine AA | aAa 243156 | | H1C

TPI +2739 Milk lbs +1154 Fat +0.01% Protein +0.02% Daughters: 307
 NM\$ +623 Herds: 129
 CM\$ +636 +48 lbs +42 lbs Reliability: 90%

PL Productive life +4.6 86 % Rel.
 DPR Daughter pregnancy rate -0.1 87 % Rel.
 SCS Somatic cell score 2.58 89 % Rel.
 SCE Sire calving ease 2.4 % Diff. 76 % Rel.
 DCE Daughter calving ease 1.5 % Diff. 58 % Rel.
 SSB Sire stillbirth 6.4 % 53 % Rel.
 DSB Daughter stillbirth 4.9 % 64 % Rel.

♂ **Gymnast** (♂ Doorsopen)

♀ SH Josie (3) EX 90 (♂ **Silver**)
 4/3 16676 3,69 615 3,48 581

♀ SH Model Josi (4) VG 87 (♂ **Model**)
 6/5 15619 3,35 523 3,35 523

♀ SH Jumper (2) VG 88 (♂ **Man-O-Man**)



Gigabyte

Proofs: 2022-08

		-1	0	+1	+2
573654 Gigabyte	PTAT Type				+1.83
	UDC Udder Composite				+2.05
	FLC Feet & Legs Composite				+0.95
	BSC Body Composite				+1.06
	Stature Short				+2.10 Tall
	Strength Frail				+0.82 Strong
	Body depth Shallow				+0.35 Deep
	Dairy form Tight Ribbed				+0.60 Open Ribbed
	Rump angle High Pins				+1.37 Sloped
	Thurl width Narrow				+1.40 Wide
	Rear leg (side view) Posty				-0.67 Sickled
	Rear leg (rear view) Hock-in				+1.58 Straight
	Foot angle Low Angle				+1.36 Steep Angle
	Feet & Legs Score Low				+1.26 High
	Fore udder attachment Loose				+2.06 Strong
	Rear udder height Low				+4.06 High
	Rear udder width Narrow				+2.99 Wide
	Udder cleft Weak				+0.80 Strong
	Udder depth Deep				+2.04 Shallow
	Front teat placement Wide				-0.75 Close
	Rear teat placement Wide				-0.29 Close
	Teat length Short				+1.29 Long

Super Uno

daughter proven

619175
624HO09020
HOLDEUM000359736504



Born: 2017-04-10 SUPER UNO
Beta Caseine A1A2 | Kappa Caseine AE | aAa 234156 |

TPI +2744 Milk lbs +1519 Fat +0.02 % Protein ±0.00 % Daughters: 107
NM\$ +736 Herds: 44
CM\$ +743 +64 lbs +46 lbs Reliability: 88 %

PL Productive life +5.0 84 % Rel.
DPR Daughter pregnancy rate +2.3 84 % Rel.
SCS Somatic cell score 2.69 88 % Rel.
SCE Sire calving ease 2.1 % Diff. 62 % Rel.
DCE Daughter calving ease 1.9 % Diff. 52 % Rel.
SSB Sire stillbirth 6.4 % 45 % Rel.
DSB Daughter stillbirth 5.1 % 56 % Rel.

♂ Superhero (♂ Supershot)

♀ Ladylike (2) VG 86 (♂ Missouri)

3/2 12140 3,86 468 3,54 430

♀ HLM Lanette (1) VG 85 (♂ Numero Uno)

3/2 10607 4,65 493 3,66 388

♀ Lana (5) VG 86 (♂ Planet)



Super Uno

Proofs: 2022-08

619175 Super Uno		-1	0	+1	+2
PTAT	Type				+0.64
UDC	Udder Composite				+0.72
FLC	Feet & Legs Composite				-0.18
BSC	Body Composite				+0.72
Stature	Short				+0.49 Tall
Strength	Frail				+0.40 Strong
Body depth	Shallow				+0.19 Deep
Dairy form	Tight Ribbed				-0.12 Open Ribbed
Rump angle	High Pins				-0.79 Sloped
Thurl width	Narrow				+1.43 Wide
Rear leg (side view)	Posty				+0.95 Sickled
Rear leg (rear view)	Hock-in				-0.60 Straight
Foot angle	Low Angle				-0.49 Steep Angle
Feet & Legs Score	Low				+0.15 High
Fore udder attachment	Loose				+1.42 Strong
Rear udder height	Low				+1.32 High
Rear udder width	Narrow				+1.36 Wide
Udder cleft	Weak				-0.20 Strong
Udder depth	Deep				+0.58 Shallow
Front teat placement	Wide				-1.49 Close
Rear teat placement	Wide				-0.70 Close
Teat length	Short				+1.39 Long

Imano

daughter proven

811613
624HO09052
HOLDEUM000360243452



Born: 2018-01-06 IMANO
Beta Caseine A1A2 | Kappa Caseine AA | aAa 432561 |

TPI +2736 Milk lbs +701 Fat +0.19 % Protein +0.06 % Daughters: 145
NM\$ +768 Herds: 81
CM\$ +781 +81 lbs +40 lbs Reliability: 88 %

PL Productive life +4.5 84 % Rel.
DPR Daughter pregnancy rate -0.9 86 % Rel.
SCS Somatic cell score 2.89 88 % Rel.
SCE Sire calving ease 2.2 % Diff. 77 % Rel.
DCE Daughter calving ease 1.9 % Diff. 56 % Rel.
SSB Sire stillbirth 6.2 % 55 % Rel.
DSB Daughter stillbirth 4.9 % 62 % Rel.

♂ Imax (♂ AltaSpring)

♀ Denver (3) VG 88 (♂ Kooper)

5/4 14398 4,13 594 3,41 491

♀ DE-SU Maurice 2618-ET (2) VG 85 (♂ Maurice)

5/4 12408 4,30 533 3,26 405

♀ DE-SU 1061 (♂ Shamrock)



Imano

Proofs: 2022-08

811613 Imano		-1	0	+1	+2
PTAT	Type				+0.76
UDC	Udder Composite				+1.36
FLC	Feet & Legs Composite				+0.65
BSC	Body Composite				+0.18
Stature	Short				+0.22 Tall
Strength	Frail				+0.05 Strong
Body depth	Shallow				-0.15 Deep
Dairy form	Tight Ribbed				-0.21 Open Ribbed
Rump angle	High Pins				+0.58 Sloped
Thurl width	Narrow				+0.05 Wide
Rear leg (side view)	Posty				-1.80 Sickled
Rear leg (rear view)	Hock-in				+0.43 Straight
Foot angle	Low Angle				+1.33 Steep Angle
Feet & Legs Score	Low				+0.74 High
Fore udder attachment	Loose				+1.40 Strong
Rear udder height	Low				+1.67 High
Rear udder width	Narrow				+1.22 Wide
Udder cleft	Weak				+0.15 Strong
Udder depth	Deep				+1.79 Shallow
Front teat placement	Wide				+0.16 Close
Rear teat placement	Wide				+0.10 Close
Teat length	Short				+0.12 Long

Tosco

daughter proven

811604
624H009031
HOLNLDM000685695296



Born: 2017-07-22 PEAK TOSCO

Beta Caseine A1A2 | Kappa Caseine BE | aAa 342156 |

TPI +2725 Milk lbs +798 Fat +0.15% Protein +0.03% Daughters: 289
 NM\$ +793 Herds: 85
 CM\$ +803 +73 lbs +34 lbs Reliability: 90%

PL Productive life +4.6 87 % Rel.
 DPR Daughter pregnancy rate -0.2 87 % Rel.
 SCS Somatic cell score 2.79 89 % Rel.
 SCE Sire calving ease 1.1 % Diff. 78 % Rel.
 DCE Daughter calving ease 1.1 % Diff. 62 % Rel.
 SSB Sire stillbirth 4.3 % 58 % Rel.
 DSB Daughter stillbirth 4.0 % 67 % Rel.

♂ Topshot (♂ Supershot)

♀ Koepon Ruby-Ann (♂ Rubicon)

♀ Buitenlust Jbr Regenia 150 (1) VG 86 (♂ Jabir)

4/4 11448 4,06 465 3,49 399

♀ Koepon Bkm Regenia 104 (1) VG 86 (♂ Bookem)



Tosco

Proofs: 2022-08

811604 Tosco

		-1	0	+1	+2
PTAT	Type				+0.75
UDC	Udder Composite				+0.87
FLC	Feet & Legs Composite				+1.68
BSC	Body Composite				-0.51
Stature	Short				-0.29 Tall
Strength	Frail				-0.57 Strong
Body depth	Shallow				-1.00 Deep
Dairy form	Tight Ribbed				-0.38 Open Ribbed
Rump angle	High Pins				-1.40 Sloped
Thurl width	Narrow				-0.76 Wide
Rear leg (side view)	Posty				-0.18 Sickled
Rear leg (rear view)	Hock-in				+1.58 Straight
Foot angle	Low Angle				+0.34 Steep Angle
Feet & Legs Score	Low				+1.55 High
Fore udder attachment	Loose				+1.51 Strong
Rear udder height	Low				+0.68 High
Rear udder width	Narrow				+0.97 Wide
Udder cleft	Weak				+0.24 Strong
Udder depth	Deep				+0.78 Shallow
Front teat placement	Wide				-0.23 Close
Rear teat placement	Wide				-0.15 Close
Teat length	Short				+0.85 Long

Senator

daughter proven

573656
624H009053
HOLNLDM000586897298



Born: 2018-01-25 PEAK SENATOR

Beta Caseine A1A1 | Kappa Caseine EE | aAa 432516 |

TPI +2714 Milk lbs +1517 Fat +0.10% Protein -0.02% Daughters: 36
 NM\$ +670 Herds: 21
 CM\$ +668 +89 lbs +40 lbs Reliability: 86%

PL Productive life +2.0 78 % Rel.
 DPR Daughter pregnancy rate -1.6 79 % Rel.
 SCS Somatic cell score 2.93 84 % Rel.
 SCE Sire calving ease 2.1 % Diff. 76 % Rel.
 DCE Daughter calving ease 1.7 % Diff. 46 % Rel.
 SSB Sire stillbirth 6.0 % 53 % Rel.
 DSB Daughter stillbirth 5.0 % -- % Rel.

♂ Sound System (♂ Silver)

♀ Ruby-Ann (♂ Rubicon)

♀ Regenia 150 (1) VG 86 (♂ Jabir)

4/4 11448 4,06 465 3,49 399

♀ Regenia 104 (1) VG 86 (♂ Bookem)



Senator

Proofs: 2022-08

573656 Senator

		-1	0	+1	+2
PTAT	Type				+1.95
UDC	Udder Composite				+1.24
FLC	Feet & Legs Composite				+1.03
BSC	Body Composite				+0.25
Stature	Short				+1.46 Tall
Strength	Frail				+0.74 Strong
Body depth	Shallow				+0.96 Deep
Dairy form	Tight Ribbed				+1.76 Open Ribbed
Rump angle	High Pins				-0.49 Sloped
Thurl width	Narrow				+0.77 Wide
Rear leg (side view)	Posty				+1.62 Sickled
Rear leg (rear view)	Hock-in				+1.44 Straight
Foot angle	Low Angle				+0.37 Steep Angle
Feet & Legs Score	Low				+1.34 High
Fore udder attachment	Loose				+1.86 Strong
Rear udder height	Low				+2.26 High
Rear udder width	Narrow				+2.01 Wide
Udder cleft	Weak				+0.03 Strong
Udder depth	Deep				+1.29 Shallow
Front teat placement	Wide				-0.24 Close
Rear teat placement	Wide				-0.59 Close
Teat length	Short				+1.03 Long

Gipsy

daughter proven

768444
624HO09038
HOLDNKM000000259958



Born: 2017-12-01 GIPSY

Beta Caseine A1A2 | Kappa Caseine AB | aAa 243165 |

TPI +2692 Milk lbs +1119 Fat +0.06% Protein +0.02% Daughters: 67
 NM\$ +668 +1119 +0.06% +0.02% Herds: 33
 CM\$ +675 +60 lbs +40 lbs Reliability: 88%

PL Productive life +3.6 81 % Rel.
 DPR Daughter pregnancy rate +1.3 79 % Rel.
 SCS Somatic cell score 2.82 87 % Rel.
 SCE Sire calving ease 2.2 % Diff. 69 % Rel.
 DCE Daughter calving ease 1.8 % Diff. 49 % Rel.
 SSB Sire stillbirth 6.7 % 47 % Rel.
 DSB Daughter stillbirth 5.1 % 51 % Rel.

♂ **Gymnast** (♂ Doorsopen)

♀ Giga-star VG87 (1) VG 87 (♂ **Silver**)

2/2 12820 3,74 479 3,32 426

♀ Gaga VG87 (1) VG 87 (♂ **Massey**)

♀ Gatsby VG88 (3) VG 88 (♂ **LIMBO**)



Gipsy

Proofs: 2022-08

768444 Gipsy		-1	0	+1	+2
PTAT	Type				+0.76
UDC	Udder Composite				+1.44
FLC	Feet & Legs Composite				+0.36
BSC	Body Composite				-0.19
Stature	Short				+0.96 Tall
Strength	Frail				-0.34 Strong
Body depth	Shallow				-0.52 Deep
Dairy form	Tight Ribbed				+0.53 Open Ribbed
Rump angle	High Pins				-0.34 Sloped
Thurl width	Narrow				+0.73 Wide
Rear leg (side view)	Posty				+0.66 Sickled
Rear leg (rear view)	Hock-in				+0.74 Straight
Foot angle	Low Angle				+0.38 Steep Angle
Feet & Legs Score	Low				+0.51 High
Fore udder attachment	Loose				+0.98 Strong
Rear udder height	Low				+2.69 High
Rear udder width	Narrow				+1.63 Wide
Udder cleft	Weak				+1.04 Strong
Udder depth	Deep				+1.66 Shallow
Front teat placement	Wide				-0.60 Close
Rear teat placement	Wide				-0.17 Close
Teat length	Short				+0.68 Long

Gracian

daughter proven

768604

HOLDEUM000123031049



Born: 2017-09-20 KAX GRACIAN

Beta Caseine A1A2 | Kappa Caseine AB | aAa --- |

TPI +2674 Milk lbs +772 Fat +0.17% Protein +0.11% Daughters: 157
 NM\$ +610 +772 +0.17% +0.11% Herds: 82
 CM\$ +629 +78 lbs +55 lbs Reliability: -- %

PL Productive life +1.5 83 % Rel.
 DPR Daughter pregnancy rate -1.1 81 % Rel.
 SCS Somatic cell score 2.97 88 % Rel.
 SCE Sire calving ease 1.8 % Diff. 72 % Rel.
 DCE Daughter calving ease 1.4 % Diff. 53 % Rel.
 SSB Sire stillbirth 5.9 % 49 % Rel.
 DSB Daughter stillbirth 4.6 % 57 % Rel.

♂ **Gymnast** (♂ Doorsopen)

♀ Nikita (1) VG 87 (♂ **Silver**)

3/3 12411 4,28 531 3,71 461

♀ Ninna (3) VG 89 (♂ **Supersire**)

3/3 15308 3,95 604 3,42 523

♀ Nemo (1) VG 87 (♂ **Stol Joc**)



Gracian

Proofs: 2022-08

768604 Gracian		-1	0	+1	+2
PTAT	Type				+1.26
UDC	Udder Composite				+0.53
FLC	Feet & Legs Composite				+0.71
BSC	Body Composite				+1.18
Stature	Short				+2.20 Tall
Strength	Frail				+1.46 Strong
Body depth	Shallow				+1.77 Deep
Dairy form	Tight Ribbed				+1.76 Open Ribbed
Rump angle	High Pins				+0.78 Sloped
Thurl width	Narrow				+1.81 Wide
Rear leg (side view)	Posty				+0.14 Sickled
Rear leg (rear view)	Hock-in				+1.29 Straight
Foot angle	Low Angle				+0.75 Steep Angle
Feet & Legs Score	Low				+1.10 High
Fore udder attachment	Loose				+0.30 Strong
Rear udder height	Low				+1.47 High
Rear udder width	Narrow				+1.79 Wide
Udder cleft	Weak				+1.35 Strong
Udder depth	Deep				+0.31 Shallow
Front teat placement	Wide				+0.46 Close
Rear teat placement	Wide				+0.83 Close
Teat length	Short				+1.10 Long

Charking

daughter proven

619167
624HO09019
HOLDEUM000360044875



Born: 2017-01-27 WEH CHARKING

Beta Caseine ---- | Kappa Caseine -- | aAa 243615 | |

TPI +2672 | Milk lbs +1248 | Fat +0.05 % | Protein -0.01 % | Daughters: 215
 NM\$ +718 | Fat +62 lbs | Protein +37 lbs | Herds: 78
 CM\$ +727 | Reliability: 90 %

PL Productive life +4.1 83 % Rel.
 DPR Daughter pregnancy rate +0.5 84 % Rel.
 SCS Somatic cell score 2.56 87 % Rel.
 SCE Sire calving ease 2.5 % Diff. 67 % Rel.
 DCE Daughter calving ease 2.4 % Diff. 57 % Rel.
 SSB Sire stillbirth 5.6 % 47 % Rel.
 DSB Daughter stillbirth 4.6 % 62 % Rel.

♂ DG Charley (♂ Supershot)

♀ WEH GoldenGirl (1) VG 85 (♂ Missouri)
 1/1 10814 4,14 448 3,43 371

♀ WEH Gini (1) VG 85 (♂ Supersire)
 5/4 13256 4,50 596 3,47 460

♀ WEH Georgia (1) VG 87 (♂ Baxter 2)



Charking

Proofs: 2022-08

619167 Charking		-1	0	+1	+2
PTAT	Type				+0.69
UDC	Udder Composite				+0.70
FLC	Feet & Legs Composite				+0.53
BSC	Body Composite				-0.63
Stature	Short				+0.92 Tall
Strength	Frail				-0.72 Strong
Body depth	Shallow				-0.34 Deep
Dairy form	Tight Ribbed				+0.50 Open Ribbed
Rump angle	High Pins				+1.01 Sloped
Thurl width	Narrow				-0.34 Wide
Rear leg (side view)	Posty				+0.38 Sickled
Rear leg (rear view)	Hock-in				+0.02 Straight
Foot angle	Low Angle				-0.03 Steep Angle
Feet & Legs Score	Low				+0.93 High
Fore udder attachment	Loose				+1.39 Strong
Rear udder height	Low				+0.92 High
Rear udder width	Narrow				+0.15 Wide
Udder cleft	Weak				+0.19 Strong
Udder depth	Deep				+1.69 Shallow
Front teat placement	Wide				-0.10 Close
Rear teat placement	Wide				+0.03 Close
Teat length	Short				+0.44 Long

Boudy

daughter proven

156599
624HO09037
HOLNLDM000597646670



Born: 2017-12-19 K&L GN BOUDY

Beta Caseine A2A2 | Kappa Caseine AB | aAa 423651 | |

TPI +2647 | Milk lbs +742 | Fat +0.07 % | Protein +0.06 % | Daughters: 43
 NM\$ +663 | Fat +48 lbs | Protein +40 lbs | Herds: 30
 CM\$ +679 | Reliability: 86 %

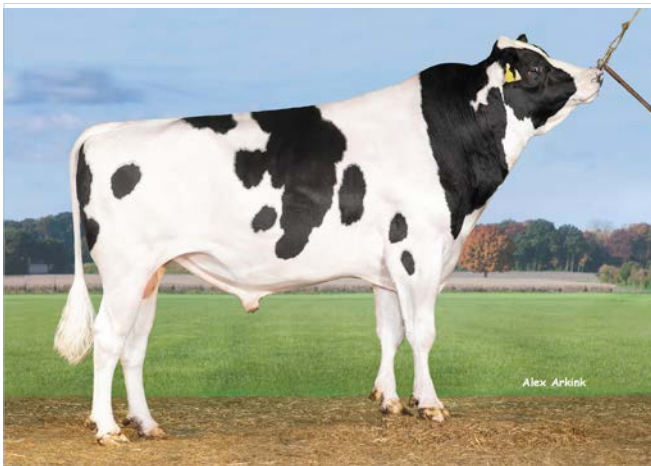
PL Productive life +5.5 80 % Rel.
 DPR Daughter pregnancy rate +0.3 79 % Rel.
 SCS Somatic cell score 2.71 88 % Rel.
 SCE Sire calving ease 2.9 % Diff. 77 % Rel.
 DCE Daughter calving ease 1.5 % Diff. 44 % Rel.
 SSB Sire stillbirth 6.6 % 51 % Rel.
 DSB Daughter stillbirth 4.3 % 46 % Rel.

♂ Gymnast (♂ Doorsopen)

♀ JHS Cinderella 34 (1) VG 85 (♂ Rubicon)
 1/1 10422 4,19 437 3,68 384

♀ JHS Cinderella 24 (1) VG 87 (♂ Supersire)
 3/3 11412 3,72 425 3,33 380

♀ JK Eder DG Chipmunk (1) VG 86 (♂ Bookem)



Boudy

Proofs: 2022-08

156599 Boudy		-1	0	+1	+2
PTAT	Type				+0.84
UDC	Udder Composite				+0.95
FLC	Feet & Legs Composite				+0.37
BSC	Body Composite				+0.67
Stature	Short				+1.00 Tall
Strength	Frail				+0.44 Strong
Body depth	Shallow				+0.10 Deep
Dairy form	Tight Ribbed				+0.16 Open Ribbed
Rump angle	High Pins				+0.25 Sloped
Thurl width	Narrow				+1.14 Wide
Rear leg (side view)	Posty				+0.23 Sickled
Rear leg (rear view)	Hock-in				+0.63 Straight
Foot angle	Low Angle				+0.21 Steep Angle
Feet & Legs Score	Low				+0.56 High
Fore udder attachment	Loose				+0.89 Strong
Rear udder height	Low				+1.56 High
Rear udder width	Narrow				+1.27 Wide
Udder cleft	Weak				+0.90 Strong
Udder depth	Deep				+1.41 Shallow
Front teat placement	Wide				-0.56 Close
Rear teat placement	Wide				-0.23 Close
Teat length	Short				+0.85 Long

Casino

daughter proven

156583
624HO09022
HOLNLDM000865720444



Born: 2017-02-11 CASINO
Beta Caseine A2A2 | Kappa Caseine -- | aAa 351426 |

TPI +2643 Milk lbs +1629 Fat +0.02 % Protein +0.01 %
 NM\$ +724 Daughters: 2364
 CM\$ +731 Herds: 667
 Reliability: 92 %

PL Productive life +3.8 89 % Rel.
 DPR Daughter pregnancy rate -1.5 90 % Rel.
 SCS Somatic cell score 2.82 91 % Rel.
 SCE Sire calving ease 1.8 % Diff. 80 % Rel.
 DCE Daughter calving ease 1.7 % Diff. 69 % Rel.
 SSB Sire stillbirth 5.6 % 57 % Rel.
 DSB Daughter stillbirth 4.3 % 73 % Rel.

♂ DG Charley (♂ Supershot)

♀ Broeks Madibet (♂ Mardi Gras)

♀ Broeks Plabet (1) VG 88 (♂ Planet)

2/2 11296 4,30 486 3,51 397

♀ Broeks Betty (1) VG 88 (♂ Snowman)



Casino

Proofs: 2022-08

		-1	0	+1	+2
PTAT	Type				+0.53
UDC	Udder Composite				+0.15
FLC	Feet & Legs Composite				+0.61
BSC	Body Composite				-0.25
Stature	Short				+0.44 Tall
Strength	Frail				-0.01 Strong
Body depth	Shallow				+0.40 Deep
Dairy form	Tight Ribbed				+0.91 Open Ribbed
Rump angle	High Pins				+1.49 Sloped
Thurl width	Narrow				+0.30 Wide
Rear leg (side view)	Posty				-0.14 Sickled
Rear leg (rear view)	Hock-in				+0.45 Straight
Foot angle	Low Angle				+0.70 Steep Angle
Feet & Legs Score	Low				+0.71 High
Fore udder attachment	Loose				+0.37 Strong
Rear udder height	Low				+0.43 High
Rear udder width	Narrow				+0.60 Wide
Udder cleft	Weak				-0.18 Strong
Udder depth	Deep				-0.30 Shallow
Front teat placement	Wide				+0.43 Close
Rear teat placement	Wide				+0.18 Close
Teat length	Short				-0.13 Long

Savio

daughter proven

811609
624HO09009
HOLDEUM001261455173



Born: 2017-10-13 SAVIO
Beta Caseine A1A2 | Kappa Caseine AB | aAa 423561 |

TPI +2642 Milk lbs +891 Fat +0.04 % Protein +0.01 %
 NM\$ +574 Daughters: 131
 CM\$ +581 Herds: 55
 Reliability: 88 %

PL Productive life +4.7 84 % Rel.
 DPR Daughter pregnancy rate +0.9 85 % Rel.
 SCS Somatic cell score 2.77 88 % Rel.
 SCE Sire calving ease 2.2 % Diff. 67 % Rel.
 DCE Daughter calving ease 2.1 % Diff. 54 % Rel.
 SSB Sire stillbirth 6.1 % 48 % Rel.
 DSB Daughter stillbirth 4.8 % 59 % Rel.

♂ Salvatore (♂ Supershot)

♀ Guese-Prtns Yoder 5184-ET (2) VG 85 (♂ Yoder)

2/2 13630 4,12 562 3,39 462

♀ Guese-Prtns Uno Bella-ET (2) VG 85 (♂ Numero Uno)

2/2 13937 3,44 479 3,19 445

♀ Guese-Prtns BKM Bliss-ET (2) VG 86 (♂ Bookem)



Savio

Proofs: 2022-08

		-1	0	+1	+2
PTAT	Type				+1.48
UDC	Udder Composite				+1.45
FLC	Feet & Legs Composite				+1.58
BSC	Body Composite				+0.72
Stature	Short				+1.16 Tall
Strength	Frail				+0.70 Strong
Body depth	Shallow				+0.50 Deep
Dairy form	Tight Ribbed				+0.37 Open Ribbed
Rump angle	High Pins				-0.78 Sloped
Thurl width	Narrow				+0.49 Wide
Rear leg (side view)	Posty				-0.81 Sickled
Rear leg (rear view)	Hock-in				+2.26 Straight
Foot angle	Low Angle				+1.64 Steep Angle
Feet & Legs Score	Low				+1.58 High
Fore udder attachment	Loose				+1.79 Strong
Rear udder height	Low				+2.79 High
Rear udder width	Narrow				+2.42 Wide
Udder cleft	Weak				-0.07 Strong
Udder depth	Deep				+1.14 Shallow
Front teat placement	Wide				-0.85 Close
Rear teat placement	Wide				-0.89 Close
Teat length	Short				+0.98 Long

Hotspot P

daughter proven

684671
624H009018
HOLDEUM000539675034



Born: 2017-01-17 HOTSPOT P
Beta Caseine A1A2 | Kappa Caseine AB | aAa 231465 | Pp*

TPI +2621 Milk lbs +361 Fat +0.12 % Protein +0.13 % Daughters: 3617
NM\$ +558 Herds: 1430
CM\$ +581 +47 lbs +48 lbs Reliability: 92 %

PL Productive life +1.8 88 % Rel.
DPR Daughter pregnancy rate +1.0 90 % Rel.
SCS Somatic cell score 2.90 90 % Rel.
SCE Sire calving ease 1.8 % Diff. 89 % Rel.
DCE Daughter calving ease 2.1 % Diff. 87 % Rel.
SSB Sire stillbirth 5.8 % 84 % Rel.
DSB Daughter stillbirth 6.3 % 84 % Rel.

♂ Superhero (♂ Supershot)

- ♀ WIL Herz P (2) VG 87 (♂ Powerball P)
3/2 12904 4,01 518 3,62 467
- ♀ WIL Hira (1) VG 85 (♂ Saloon)
1/1 8768 4,21 369 3,50 307
- ♀ Konny (2) VG 85 (♂ Snowman)



Hotspot P

Proofs: 2022-08

		-1	0	+1	+2
PTAT	Type				+1.27
UDC	Udder Composite				+1.47
FLC	Feet & Legs Composite				+0.25
BSC	Body Composite				-0.50
Stature	Short				+0.94 Tall
Strength	Frail				-0.46 Strong
Body depth	Shallow				+0.13 Deep
Dairy form	Tight Ribbed				+1.00 Open Ribbed
Rump angle	High Pins				-0.27 Sloped
Thurl width	Narrow				+0.46 Wide
Rear leg (side view)	Posty				-1.79 Sickled
Rear leg (rear view)	Hock-in				+0.16 Straight
Foot angle	Low Angle				+0.54 Steep Angle
Feet & Legs Score	Low				+0.58 High
Fore udder attachment	Loose				+2.41 Strong
Rear udder height	Low				+1.97 High
Rear udder width	Narrow				+1.53 Wide
Udder cleft	Weak				-0.31 Strong
Udder depth	Deep				+2.41 Shallow
Front teat placement	Wide				-0.96 Close
Rear teat placement	Wide				-1.34 Close
Teat length	Short				+0.50 Long

Saltasire RDC

daughter proven

619185
624H009028
HOLNLDM000586897801



Born: 2017-10-24 PEAK SALTASIRE
Beta Caseine A1A2 | Kappa Caseine AE | aAa 342516 | RDC

TPI +2621 Milk lbs +929 Fat -0.02 % Protein +0.01 % Daughters: 54
NM\$ +608 Herds: 29
CM\$ +617 +31 lbs +32 lbs Reliability: 88 %

PL Productive life +5.4 81 % Rel.
DPR Daughter pregnancy rate +0.5 80 % Rel.
SCS Somatic cell score 2.68 86 % Rel.
SCE Sire calving ease 1.8 % Diff. 63 % Rel.
DCE Daughter calving ease 2.1 % Diff. 47 % Rel.
SSB Sire stillbirth 5.6 % 47 % Rel.
DSB Daughter stillbirth 4.9 % 50 % Rel.

♂ Salvatore RDC (♂ Supershot)

- ♀ Ri-Val-Re Hope (1) VG 86 (♂ AltaSpring)
1/1 10419 4,33 451 3,57 372
- ♀ Swampy-Hollow Hope VG 87 (♂ Supersire)
5/4 12901 3,60 465 2,94 379
- ♀ Appealing Observer Hazel (3) VG 86 (♂ Observer)



Saltasire RDC

Proofs: 2022-08

		-1	0	+1	+2
PTAT	Type				+1.66
UDC	Udder Composite				+1.87
FLC	Feet & Legs Composite				+1.19
BSC	Body Composite				+0.33
Stature	Short				+1.56 Tall
Strength	Frail				+0.47 Strong
Body depth	Shallow				+0.45 Deep
Dairy form	Tight Ribbed				+1.07 Open Ribbed
Rump angle	High Pins				+0.07 Sloped
Thurl width	Narrow				+0.58 Wide
Rear leg (side view)	Posty				+0.01 Sickled
Rear leg (rear view)	Hock-in				+1.60 Straight
Foot angle	Low Angle				+1.58 Steep Angle
Feet & Legs Score	Low				+1.37 High
Fore udder attachment	Loose				+2.40 Strong
Rear udder height	Low				+2.42 High
Rear udder width	Narrow				+2.27 Wide
Udder cleft	Weak				+0.86 Strong
Udder depth	Deep				+1.98 Shallow
Front teat placement	Wide				+1.46 Close
Rear teat placement	Wide				+1.14 Close
Teat length	Short				-0.28 Long

Solitair P

daughter proven

917617
624WW09043
HOLNLDM000576852597



Born: 2018-01-03 CAUDUMER SOLITAIR P

Beta Caseine A1A2 | Kappa Caseine BB | aAa 423516 | Pp*

TPI +2655 Milk lbs +936 Fat +0.03 % Protein +0.05 % Daughters: 201
 NM\$ +773 Herds: 118
 CM\$ +788 +46 lbs +43 lbs Reliability: 90 %

PL Productive life +6.0 87 % Rel.
 DPR Daughter pregnancy rate -0.1 85 % Rel.
 SCS Somatic cell score 2.70 89 % Rel.
 SCE Sire calving ease 1.1 % Diff. 82 % Rel.
 DCE Daughter calving ease 2.1 % Diff. 60 % Rel.
 SSB Sire stillbirth 5.1 % 57 % Rel.
 DSB Daughter stillbirth 6.2 % 62 % Rel.

♂ Salvatore RDC (♂ Supershot)

♀ Caudumer Lol 371 P RDC (1) VG 86 (♂ Balisto)

4/4 10687 4,94 528 3,77 403

♀ Caudumer Lol 305 PP (1) VG 87 (♂ Magna P RDC)

2/2 10540 4,76 502 3,84 405

♀ Lol 292 P (3) VG 87 (♂ Lawn Boy P)



Solitair P

Proofs: 2022-08

		-1	0	+1	+2
PTAT	Type				+0.59
UDC	Udder Composite				+0.99
FLC	Feet & Legs Composite				+1.19
BSC	Body Composite				-1.17
Stature	Short				-0.39 Tall
Strength	Frail				-0.96 Strong
Body depth	Shallow				-0.84 Deep
Dairy form	Tight Ribbed				+0.74 Open Ribbed
Rump angle	High Pins				-0.12 Sloped
Thurl width	Narrow				+0.16 Wide
Rear leg (side view)	Posty				+0.31 Sickled
Rear leg (rear view)	Hock-in				+1.15 Straight
Foot angle	Low Angle				+0.64 Steep Angle
Feet & Legs Score	Low				+1.01 High
Fore udder attachment	Loose				+1.27 Strong
Rear udder height	Low				+1.39 High
Rear udder width	Narrow				+1.02 Wide
Udder cleft	Weak				-0.54 Strong
Udder depth	Deep				+0.64 Shallow
Front teat placement	Wide				-0.28 Close
Rear teat placement	Wide				-0.24 Close
Teat length	Short				+0.06 Long

Holmer PP



924775
624WW09091
HOLDEUM000541082332



Born: 2021-03-19 THI HOLMER PP

Beta Caseine A1A2 | Kappa Caseine BB | aAa 432561 | PP*

TPI +2634 Milk lbs +91 Fat +0.17 % Protein +0.07 % Daughters: 0
 NM\$ +707 Herds: 0
 CM\$ +725 +50 lbs +22 lbs Reliability: -- %

PL Productive life +5.6 73 % Rel.
 DPR Daughter pregnancy rate +2.3 -- % Rel.
 SCS Somatic cell score 2.65 -- % Rel.
 SCE Sire calving ease 1.8 % Diff. -- % Rel.
 DCE Daughter calving ease 2.1 % Diff. -- % Rel.
 SSB Sire stillbirth 5.9 % -- % Rel.
 DSB Daughter stillbirth 6.1 % -- % Rel.

♂ Host PP RDC (♂ Hotspot P)

♀ Hul-Stein Amerika P RDC (1) GP 84 (♂ Match P RDC)

2/1 8930 5,04 450 3,81 340

♀ Hul-Stein Angela (1) GP 81 (♂ Salvatore RDC)

2/1 9425 4,27 402 3,62 341

♀ Angie Red (1) GP 84 (♂ Symion RDC)



Holmer PP

Proofs: 2022-08

		-1	0	+1	+2
PTAT	Type				+0.17
UDC	Udder Composite				+1.19
FLC	Feet & Legs Composite				+0.81
BSC	Body Composite				-0.76
Stature	Short				-0.74 Tall
Strength	Frail				-1.14 Strong
Body depth	Shallow				-1.55 Deep
Dairy form	Tight Ribbed				-1.27 Open Ribbed
Rump angle	High Pins				-0.88 Sloped
Thurl width	Narrow				-1.41 Wide
Rear leg (side view)	Posty				-1.48 Sickled
Rear leg (rear view)	Hock-in				+0.87 Straight
Foot angle	Low Angle				+0.73 Steep Angle
Feet & Legs Score	Low				+0.57 High
Fore udder attachment	Loose				+2.16 Strong
Rear udder height	Low				+1.26 High
Rear udder width	Narrow				+0.12 Wide
Udder cleft	Weak				-1.08 Strong
Udder depth	Deep				+2.70 Shallow
Front teat placement	Wide				-1.73 Close
Rear teat placement	Wide				-1.82 Close
Teat length	Short				+1.30 Long

Moro PP RDC



619241
624H009092
HOLDEUM000667736532



Born: 2021-07-24 MORO PP
Beta Caseine A1A2 | Kappa Caseine AB | aAa 234165 | PP* | RDC

TPI +2732 Milk lbs +631 Fat +0.11 % Protein +0.07 %
 NM\$ +644 Daughters: 0 Herds: 0
 CM\$ +658 Reliability: -- %

PL Productive life +3.5 73 % Rel.
 DPR Daughter pregnancy rate +1.0 -- % Rel.
 SCS Somatic cell score 2.85 -- % Rel.
 SCE Sire calving ease 1.8 % Diff. -- % Rel.
 DCE Daughter calving ease 2.2 % Diff. -- % Rel.
 SSB Sire stillbirth 5.5 % -- % Rel.
 DSB Daughter stillbirth 4.7 % -- % Rel.

♂ Money P (♂ Match P)

♀ Tasia P (♂ Hotspot P)

♀ HWH Thalia (1) GP 82 (♂ Kerrigan)
 4/3 8399 4,21 354 3,75 315

♀ Talia (♂ Mardi Gras)



Moro PP RDC

Proofs: 2022-08

619241 Moro PP RDC		-1	0	+1	+2
PTAT	Type				+1.46
UDC	Udder Composite				+2.06
FLC	Feet & Legs Composite				+1.15
BSC	Body Composite				+0.15
Stature	Short				+0.64 Tall
Strength	Frail				+0.05 Strong
Body depth	Shallow				-0.11 Deep
Dairy form	Tight Ribbed				+0.32 Open Ribbed
Rump angle	High Pins				-0.61 Sloped
Thurl width	Narrow				+0.74 Wide
Rear leg (side view)	Posty				-0.43 Sickled
Rear leg (rear view)	Hock-in				+1.32 Straight
Foot angle	Low Angle				+0.88 Steep Angle
Feet & Legs Score	Low				+1.19 High
Fore udder attachment	Loose				+2.57 Strong
Rear udder height	Low				+2.53 High
Rear udder width	Narrow				+2.13 Wide
Udder cleft	Weak				+0.60 Strong
Udder depth	Deep				+2.12 Shallow
Front teat placement	Wide				+0.48 Close
Rear teat placement	Wide				+0.58 Close
Teat length	Short				+0.29 Long

Hadil PP



811673
624H009093
HOLDEUM000541494488



Born: 2021-04-11 HFP HADIL PP
Beta Caseine A2A2 | Kappa Caseine AB | aAa 432561 | PP |

TPI +2620 Milk lbs +822 Fat ±0.00 % Protein +0.04 %
 NM\$ +492 Daughters: 0 Herds: 0
 CM\$ +505 Reliability: -- %

PL Productive life +4.0 73 % Rel.
 DPR Daughter pregnancy rate +1.9 -- % Rel.
 SCS Somatic cell score 2.69 -- % Rel.
 SCE Sire calving ease 2.2 % Diff. -- % Rel.
 DCE Daughter calving ease 2.1 % Diff. -- % Rel.
 SSB Sire stillbirth 6.5 % -- % Rel.
 DSB Daughter stillbirth 6.1 % -- % Rel.

♂ Hesekei PP (♂ Hotspot P)

♀ HFP Keeva (1) VG 86 (♂ Adlon P)
 2/1 9952 3,96 394 3,58 356

♀ WIL Kira (3) VG 88 (♂ Superhero)
 3/3 13170 4,15 546 3,64 480

♀ WIL Kati (1) VG 85 (♂ Penley)



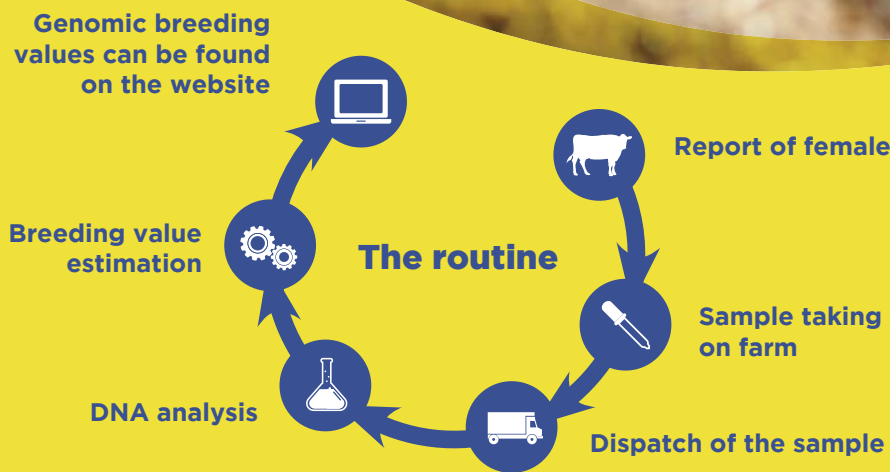
Hadil PP

Proofs: 2022-08

811673 Hadil PP		-1	0	+1	+2
PTAT	Type				+1.39
UDC	Udder Composite				+1.72
FLC	Feet & Legs Composite				+0.86
BSC	Body Composite				+0.61
Stature	Short				+1.42 Tall
Strength	Frail				+0.38 Strong
Body depth	Shallow				+0.19 Deep
Dairy form	Tight Ribbed				+0.25 Open Ribbed
Rump angle	High Pins				+0.40 Sloped
Thurl width	Narrow				+0.66 Wide
Rear leg (side view)	Posty				-0.72 Sickled
Rear leg (rear view)	Hock-in				+1.09 Straight
Foot angle	Low Angle				+0.80 Steep Angle
Feet & Legs Score	Low				+1.14 High
Fore udder attachment	Loose				+2.54 Strong
Rear udder height	Low				+1.82 High
Rear udder width	Narrow				+1.48 Wide
Udder cleft	Weak				+0.36 Strong
Udder depth	Deep				+3.07 Shallow
Front teat placement	Wide				+0.31 Close
Rear teat placement	Wide				+0.18 Close
Teat length	Short				-0.11 Long



**Make
the right
decision now
with herd
genotyping!**



Your advantages: KUHVISION®

- ✓ Exclusive genomic breeding values for female mating
- ✓ Optimized mating service with "genomBAP" plus access to the internet browser-based portal „Netrindgenom“
- ✓ Increased breeding progress
- ✓ Improvement of herd health with innovative health breeding values
- ✓ Herd replacement as planned
- ✓ Significantly reduced rearing costs by only raising the very best heifers
- ✓ Clearly better profitability
- ✓ 63 indexes and characteristics available incl. Polled status, Beta/Kappa Casein for each animal



GGI-SPERMEX GmbH

Am Osterfeld 14
49661 Cloppenburg-Bethen
Germany

Phone: +49 4471 91 74-0
Fax: +49 4471 91 74-74

Email: info@ggi-spermex.de
Internet: www.ggi-spermex.de

Distribuidor en España:
IMPORT EXPORT BAS, SL
Carretera Martins, 24 - Parcel·la 5
17176 Sant Esteve d'en Bas (GIRONA)
Telefonos 972 690 426 · 649 425 331
www.bas-sl.com · info@bas-sl.com
Redes Sociales: @importexportbas

**For more information, please contact
your GGI-SPERMEX partner!**

✉ info@ggi-spermex.de
🌐 www.ggi-spermex.de

